

# Uptime HARVEST™



## Gaining a transparent view of fleet operation and performance

---

Uptime HARVEST™ is a generic software-as-a-service solution for gathering, visualisation and reporting of operational fleet data. Uptime HARVEST™ allows operators of technical fleets such as passenger cars, trucks, wind turbines, photovoltaic and hydro power plants to maintain a constant view of the current

and past status of the equipment. Data is gathered continuously from the field and presented to control centre technicians and data analysts. Issues relating to performance and availability are quickly detected and reported, ensuring early detection and efficient response.

### + Benefit 01

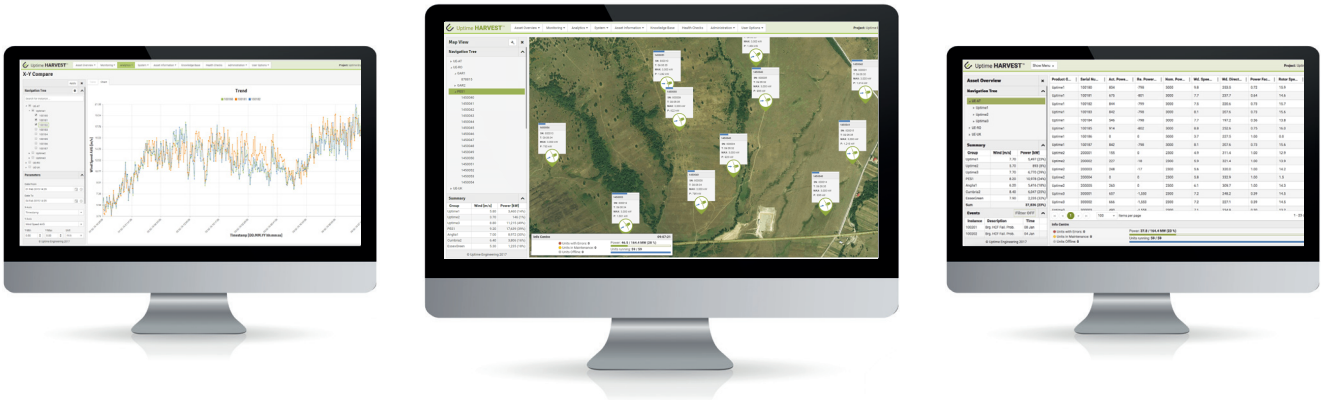
Uptime HARVEST™ provides a complete infrastructure for data acquisition, storage, visualisation and reporting. Data is gathered and stored on a state-of-the-art computing centre located and a known physical location (Graz, Austria) and managed according to the highest standards of data security.

### + Benefit 02

Uptime HARVEST™ allows the user to easily visualise the operational status of large fleets using a range of web-based technologies. A geographical information system provides an intuitive view of the location of assets and presents real-time operational data at individual asset level as well as various levels of aggregation.

### + Benefit 03

Operators of technical fleets are required to produce standardised reports detailing the historical performance and status of all monitored assets. Such reports may be distributed internally or to external partners, customers or suppliers. Uptime HARVEST™ includes advanced customisable reporting functionalities.



## Monitoring

Uptime HARVEST™ allows our customers to gain quickly an overview on the status of their operating fleets. The system has been developed with the aim of monitoring fleet operations, tracking alarms, checking asset status, coordinate and execute maintenance activities. Operational data may also be analysed. Uptime HARVEST™ increases thus operational

efficiency through the broad coverage of required task documentation and is suited ideally to the challenge of managing assets of increasing complexity and size. Uptime HARVEST™ may be integrated into control room processes dedicated to substantial improvements of fleet operations.

## Features

- ✓ **Asset Overview**, to provide online information about fleet operational status. Multiple visualisation options, including a geographical (map-based) view, a traditional list-based view as well as a view optimised for access via mobile devices.
- ✓ **Charts** allowing the user to visualise historical time-series data using tools such as trend lines or scatter plots.
- ✓ **States & Events** management, allowing the operational state of all assets to be interrogated with respect to various categories such as performance, availability, maintenance, revenue generation.
- ✓ **Documentation**, allowing background information relating to assets to be managed directly within Uptime HARVEST™, including for example technical specifications, wiring diagrams, photos or contracts.
- ✓ **Reporting** for preparation and deployment of custom designed reports covering financial and technical aspects of asset management.
- ✓ **Asset Information** including a full definition of the monitored assets, covering meta data such as geographical location, serial number, configuration as well as providing a hierarchical component tree defining taxonomy and structure of sub-systems and components within each asset.



More information:  
[uptime-engineering.com/software/uptime-harvest/](http://uptime-engineering.com/software/uptime-harvest/)

Keeping Technology Alive